



CHI WORK AND TRAVEL

255 West End Avenue
San Rafael, CA 94901 USA

1-800-432-4643 x2
1-415-459-5397 x2

chiwt@chinet.org

wt.chinet.org

Job Description

EMPLOYER INFORMATION

Employer Name: Jeff Ellis Management - Nashville
DBA: Jeff Ellis Management, LLC.
Type of Business: Pool Management
Job location: 2800 OPRYLAND DR
Location type: Resort
City: Nashville
State: TN
Zip: 37214
Website: <https://jeffellismanagement.com/>

Why choose us?

Working as a lifeguard at SoundWaves, the state-of-the-art aquatic attraction featuring four acres of indoor and outdoor play structures, lazy and rapid rivers, waterslides, and on-site dining options. CPR and Lifeguard certification training. Interaction with guests from around the world.

Host Company arranges cultural activities for the participants such as lunches, trips to the zoo, and other events.

Cultural exchange activities

Creativity is the heart and soul of Music City and there's never a shortage of inspiring things to do. From music, culture, and the arts to food, sports, and shopping, there is an "only in Nashville" experience waiting for you. Nashville is a top city destination for travelers from all over the world. You can enjoy endless music venues, vibrant nightlife, professional sports, art, dining, and shopping experience.

Local Outings and Appreciation Events.

Position

Job title: Lifeguard

Job prerequisites: ILTP Lifeguard License or Equivalent, Enrolled/Graduated High School or Equivalent.
We ask that you submit a video(s) showing you doing the following skills:

Minimum: (shallow water) 50 yard continuous swim, 5 feet 10 lb brick retrieval
Maximum: (special facilities) 200 yard continuous swim, 9 feet 10lb brick retrieval, 2 minute hands free tread.

Have to be able to walk or stand for an extended period of time and be able to work in both wet and dry stations.

Job description: Provide general oversight, "Gold Standard" safety, and excellent customer service for guests/swimmers frequenting Soundwaves operated by Jeff Ellis Management, LLC. Lifeguards must consistently perform the following duties:

- Maintain vigilance of guests/swimmers by consistently scanning swimmer protection zones to maintain the E&A "10/20 Protection Rule"
- Enforce safety rules, riding instructions, and regulations for the safety of guests/swimmers
- Render aid by rescuing distressed swimmers
- Provide first aid and emergency care for guests/swimmers who suffer injuries or sudden illness
- Provide a warm and inviting atmosphere when assisting guests
- Perform additional tasks as assigned

English level required: Advanced



CHI WORK AND TRAVEL

255 West End Avenue
San Rafael, CA 94901 USA

1-800-432-4643 x2
1-415-459-5397 x2

chiwt@chinet.org

wt.chinet.org

Job Description

Hourly wage (before taxes): 13.00
Wage comments: 13.00 per hour
Position ID: 22516
Union: No
Union Dues:

Position Information

Tips: Not usually for this position

Bonus: No

Bonus comments:

Estimated hours per day: 32 hours per week minimum

Number of days per week: Varies

Overtime: Slight

Overtime details: Overtime is paid at the rate of 1.5 hourly, after 40 hours of work per week.

Earliest start date: 12/1/2023

Latest start date: 1/1/2024

Earliest end date: 3/1/2024

Latest end date: 3/31/2024

Is the employer willing to hire couples? Yes

Is the employer willing to hire group of friends? Yes

Meals? Yes

Meals details: Meal provided for a 6-hour shift worked. 1 entree, 2 sides, and a beverage for the meal.

Is a drug test required? No

Drug test comments:

Is employer interview required? Yes

Employer interview details: There is no interview required, but there is a submission video required for Host Company to view before placement.

Do students complete an additional application upon arrival? No

Possibility to find a second job in the area Yes

Second jobs require you to contact CHI at chiwt@chinet.org or 1-800-432-4643 to receive the required form. The new potential employer will need to complete it. Both you and the employer will need to sign and return it to CHI for approval. You can work with a new secondary employer ONLY AFTER you have received written authorization from CHI.

Additional comments regarding second job: Second jobs must NOT conflict with the primary job schedule! Work & Travel Adult International Participants are not permitted to begin work before their Sponsor has approved any secondary Host Company. If you are found starting any new job without permission from CHI your program will be terminated. This is for your safety. A second job offer and instructions will be provided in your welcome letter. Your CHI program coordinator is always available to help you with this process.

When will work begin? Email will go out 1 week prior to arrival with all information

Arrival Instructions: If the student arrives before 8 pm, the employer will pick up from the airport. Must be in communication with Host Company PRIOR to arriving to schedule pickup. Your official start date will be scheduled once you arrive at the employer. Start dates may vary several days from your DS date. Please be patient and allow the employer to integrate you into the



CHI WORK AND TRAVEL

255 West End Avenue
San Rafael, CA 94901 USA

1-800-432-4643 x2
1-415-459-5397 x2

chiwt@chinet.org

wt.chinet.org

Job Description

schedule.

Is training required? Yes

Conditions of training: The Host Company will provide you with information. You are required to complete a 3 day/24-hour training course. Training may take up to two weeks. Students may not receive full hours until the training period is complete. No job, or hours at a job, can be 100% guaranteed. Regardless of what your work contract states, there is always a possibility that you will work more or less hours. Participants should expect to have less hours during the first two weeks of training. Students will be required to work on peak business days, Friday, Saturday, and Sundays.

Is there possibility to change positions? No

Uniform required? Yes

Does employer provide uniform? Yes

Cost of uniform: \$0

Is uniform refundable? No

Uniform provided details: Please refer to uniform flyer

Do students need to purchase specific clothes or footwear? Yes

If so, details for clothing: Crocs, Teva styled water shoes are ideal, Lifeguards are able to take their shoes off while on the guard stand.

Grooming: No tattoos-face/neck or hands. Natural hair color, men clean-shaven or full beard. No earrings for men, 1 set for women. No long nails or bright nail polish. In the United States culture, you must shower daily and use antiperspirants. Visible tattoos are permitted as they don't contain objectionable words or imagery. Please make sure your fingernails are clean, well-manicured, and of either short or moderate length. Any employee with long hair must have it up and off their shoulders.

Important points of job: Maintain vigilance of guest/swimmers by constantly scanning swimmer protection zones to maintain the E&A 10/20, Protection Rule. Enforce rules to ensure the safety of guests/swimmers. Provide a warm and inviting atmosphere when assisting guests. Team mentality and positive attitude.

Additional position information: **WHAT YOU SHOULD EXPECT AT WORK:** Must be able to continuously swim a distance of 200 yards, tread water and recover a 10-pound weight from a specified water depth. Exceptional problem-solving and critical thinking skills. Excellent communication skills. Positive attitude. Team mentality. Students would need to perform the shallow water swim test but are highly encouraged to perform the special facilities swim test. The students would also be able to "upgrade" once hired if they choose to. Warns swimmers of improper activities or danger and enforces pool regulations and water safety policies. Administers first aid in the event of injury rescues swimmers in distress or danger of drowning, and administers CPR and/or artificial respiration, if necessary.

MEDICAL ISSUES: If you travel to the U.S. knowing that you have a medical condition that would prevent you from working at your pre-arranged job, CHI will terminate your program. Please disclose any allergies (food, dust, or chemical) or pre-existing conditions that may affect your ability to fulfill your commitments at your pre-arranged job. If you have a sudden medical problem that prevents you from working at your pre-arranged job, you must get a note from a doctor in the U.S. before you take any action to leave your pre-arranged job. If the medical condition is serious or is not covered by your insurance, CHI may ask that you return to your home country, for your health and safety.

HOW TO AVOID PROGRAM TERMINATION: Within 24 hours after arrival complete the "SEVIS VALIDATION" in your online CHI Portal. (wt.chinet.org) As early as possible, but no later than



CHI WORK AND TRAVEL

255 West End Avenue
San Rafael, CA 94901 USA

1-800-432-4643 x2
1-415-459-5397 x2

chiwt@chinet.org

wt.chinet.org

Job Description

one week after changing addresses or phone numbers, update them in your CHI portal. (wt.chinet.org) Before starting work or training at a new or second job, you must get permission from CHI. Respond to all emails from CHI. You are responsible for ensuring emails from CHI do not go to spam. Monthly Evaluations must be completed each month you are on the Work Travel program.

Housing Information

Housing name: Jeff Ellis Nashville

Housing address: 1611 Saunders Ave

City: Madison

Phone: (615) 889-1000

Fax:

Contact: Conner Russell

Email: Connor.russell@jeffellismanagement.com

Website:

Housing assisted by: Employer

Is student required to sign a separate housing contract? Yes

If so, contract details: Lease will have to be signed and returned 10 days before your arrival.

Type of housing: House

Number of people to a room: 4

Bedrooms: 3-4

Bath: 2-3

Cost Type: Week

Cost Amount: \$87.50

Cost Details Rent is \$87.50/week (aka \$175 biweekly). It will be deducted directly from the paycheck (\$175).

Is housing cost deducted from paycheck? Yes

Is housing deposit required? Yes

Deposit amount: \$250

Housing deposit due date: Upon arrival

Instructions for deposit payment: Pay deposit upon arrival.

Is housing deposit refundable? Yes

Conditions for deposit refund: As long as you do not damage the property or break the rules, you will receive your deposit back.

Utilities included: Yes

If so, utilities details: All utility charges are put into consideration with the rent. If utilities are over the budgeted utility amount, everyone in the house will have equal payment towards the price.

Utilities estimated cost per month: 0

Is the housing mandatory? No

Can students find alternative housing during their stay? No

Method of transportation from housing to work site: Own

Transportation details:

Additional housing features: House comes fully equipped with all necessities (stove, oven, microwave, tables, etc...) Wifi



CHI WORK AND TRAVEL

255 West End Avenue
San Rafael, CA 94901 USA

1-800-432-4643 x2
1-415-459-5397 x2

chiwt@chinet.org

wt.chinet.org

Job Description

included.

Comments: Rent is payroll deducted, meaning it comes directly out of the paycheck. Paycheck are "BI-WEEKLY" meaning you are paid every 2 weeks. That means 2 weeks of rent is deducted each paycheck. $\$87.50 \times 2 \text{ weeks} = \175 .

If you arrive during the middle or end of the 2 week pay period- your rent may be prorated based on when you arrived.

Location Area Information

Location type: Resort

Location of work site best described as: SoundWaves is a 4 acre, 3-level upscale indoor/outdoor waterpark with dedicated recreation zones for adults, young children and families.

Location details: Nashville's culturally diverse and friendly environment makes it a favorite place for conventioners and tourists alike, as well as a great place to work and live.

Average daily temperature: Range from 20 F-60 F

Community or regional website: www.nashville.com

Nearest cities: Franklin, TN

Distance to nearest cities: 20 Miles

What to wear: Winter clothes, jackets, sneakers, boots, thermals.

Available public transportation: Nashville MTA

Public transportation access: www.nashvillemta.org

Accessible amenities (by walking or public transportation)

Food market: Yes

Shopping mall: Yes

Post office: Yes

Movie theater: Yes

Restaurants: Yes

Fitness center: Yes

Laundry: Yes

Internet café: Yes

Public library: Yes



CHI WORK AND TRAVEL

255 West End Avenue
San Rafael, CA 94901 USA

1-800-432-4643 x2
1-415-459-5397 x2

chiwt@chinet.org

wt.chinet.org

Job Description

Suggested Travel Information

Nearest international airport: Nashville International Airport

Nearest airport: Nashville International Airport

Transportation from airport to employer and / or housing: Employer will provide if student arrives before 8 p.m.

Nearest bus station (to the airport): Greyhound

Bus information (web site): www.greyhound.com

Nearest train information (to the airport): Atrak

Train information (web site): www.amtrak.com

If participant arrives after hours suggested, overnight accomodation: www.hostelworld.com

Cost per night: \$75+

Transportation to overnight accomodation: www.rome2rio.com

Transportations cost: \$45+

Travel Instructions: \$40-\$50 by Uber or Taxi

Social Security Information

Does the company require students to have Social Security number before arriving to the work place? No

Does the company provide Social Security application assistance? Yes

If so, details: Host Company will assist on transportation to Social Security Office

Where is the closest Social Security office? 120 Athens Way - Nashville TN

How far is the Social Security office from the work place? 12.4 Miles

Specific instructions:

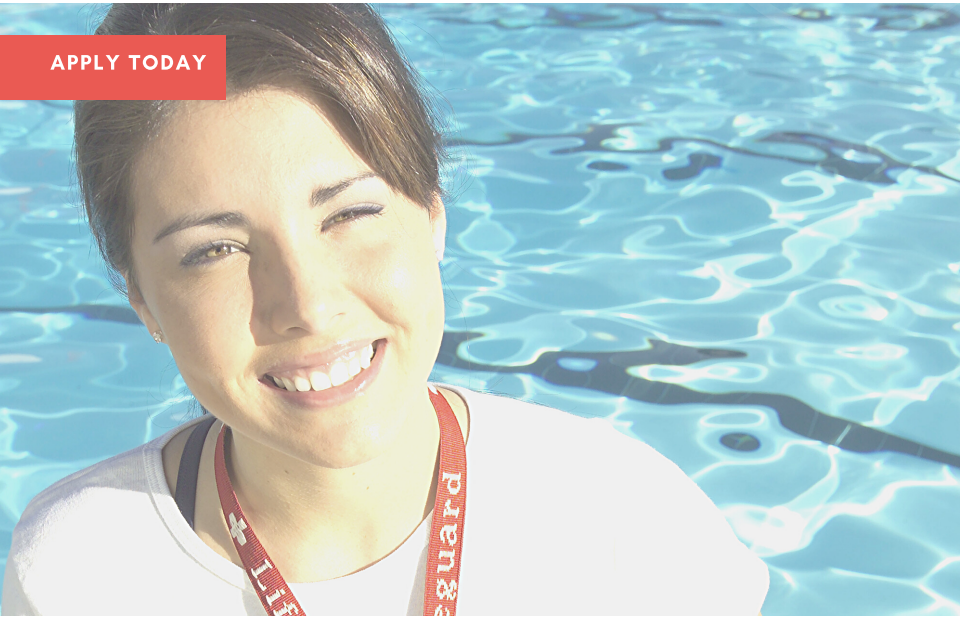
LIFEGUARD POSITIONS

WINTER SEASON

JEM

POOL MANAGEMENT

APPLY TODAY



NASHVILLE, TN

NEAR THE SMOKEY MOUNTAINS

Work in the home of country music, hot chicken, and Johnny Cash!

Must be able to continuously swim a distance of 200 yards, tread water and recover a 10lbs of weight from a specified water depth. Exceptional problem-solving and critical thinking skills. Excellent communication skills. Positive attitude. Team mentality.

- ✓ \$11-\$15 PER HOUR
- ✓ POSSIBLE OVERTIME
- ✓ HOUSING IS PROVIDED
- ✓ CPR AND LIFEGUARD TRAINING
- ✓ HISTORICAL LANDMARKS

LIFEGUARD POSITIONS

WINTER SEASON

JEM

POOL MANAGEMENT

APPLY TODAY



NASHVILLE, TN

NEAR THE SMOKEY MOUNTAINS

Work in the home of country music, hot chicken, and Johnny Cash!

Must be able to continuously swim a distance of 200 yards, tread water and recover a 10lbs of weight from a specified water depth. Exceptional problem-solving and critical thinking skills. Excellent communication skills. Positive attitude. Team mentality.

- ✓ \$11-\$15 PER HOUR
- ✓ POSSIBLE OVERTIME
- ✓ HOUSING IS PROVIDED
- ✓ CPR AND LIFEGUARD TRAINING
- ✓ HISTORICAL LANDMARKS

Welcome Letter



WORK & TRAVEL

Dear Student,

Hello and Welcome! We are so happy that you will be visiting our country. Work & Travel can be difficult, especially in the beginning, but we believe you will find your experience rewarding and unforgettable. CHI is here to help! Please read carefully through this Welcome Letter.

My name is Josephine Musto, South Atlantic Region – Program Coordinator, for Cultural Homestay International (CHI). I will be happy to answer any questions you might have and I will also be available throughout your stay to assist with any problems that may occur. Please remember to check your email daily for important communications.

You must stay in contact with your CHI representative.

Warm Travel Wishes,

Josephine Musto

Please read the CHI Student Handbook, which you should have received at orientation or from your student agency. You are responsible for following all rules in this handbook. The rules are in place for your health, safety, and welfare. Failure to follow the rules may result in a participant's negative program status.

Be Prepared

- Make photocopies of important documents and leave a copy with loved ones. Backup your digital photos, in case your phone is stolen or broken.
- Leave things you could not bear to lose at home.
- Bring your welcome letter, your important documents, two extra sets of clothes and your necessary medicine in your carry-on luggage. Checked luggage is often lost. The airline will deliver your bag to your US housing or employer once found, but it could take 3 or 4 days. **If your luggage is lost, send it to your employers address to ensure delivery.**
- You are required to bring \$1000 with you from your country, but we recommend you bring \$1200. The first few weeks of Work & Travel, you will need these funds to establish yourself in a new country. You will need to pay your housing deposit, pay a week or two of rent, buy a sim card, purchase pillows, sheets, and blankets, food, uniforms, a bicycle, or have transportation money. It takes a few weeks to start working, be trained, become integrated into the schedule and get your first paycheck. You will be nervous and out of money when your first paycheck arrives. Be prepared, you are moving to another country.

Be Safe

- Exercise adequate discretion, stay aware of your belongings, and avoid putting yourself into risky situations (such as unlit, deserted areas at night).
- Open a bank account, on the first day you check into your US housing, to keep the recommended \$1200 you brought from your country safe and secure. You will need this money. Never keep large amounts of money in your student housing, no matter how much you trust your roommates.
- Once in the United States, never carry large amounts of money. You will have a debit card from the bank, if lost, this can always be cancelled. Do not give your PIN (personal identification number) to anyone. **If you lose your cash, it cannot be replaced.**
- Once in the United States, never carry your important documents or valuables to work. Keep your documents, including passport, safely hidden in your room. Never give your passport or documents to anyone (such as a landlord or employer) to keep. It is illegal for anyone to take your passport or documents from you for any reason.
- Bring an ID from your country to carry with you that can easily be replaced (University ID, residency card, driver's license). Passports are difficult and expensive to replace and losing your passport can ruin your travel period plans.
- Establish a "do not lose it" discipline. Travelers are more likely to inadvertently lose their bags than to have them stolen. I have heard of students leaving passports under pillows, bags on the overhead rack on the bus, and documents in the taxi. Always take a look behind you before leaving any place or form of transport.
- When you are out and about, never casually or carelessly set down any small valuable item, such as a

phone or wallet. Either hold it in your hand or keep it tucked away. At cafés, do not place your phone on the tabletop or purse on the back of the chair where it will be easy to snatch — keep phones and valuables in your front pocket. Make it a habit to be careful with your things; it will become second nature.

- Stay vigilant in crowds and steer clear of disturbances near you.
- Participants should use common sense, stay with a partner or friend, especially at night. It is recommended participants let a friend know where they are.
- Bicycle riders with helmets had an 85 percent reduction in their risk of head injury and an 88 percent reduction in their risk of brain injury. If you ride a bicycle in the US, please wear a helmet.
- Check your email frequently for important information.
- Plan your flight accordingly: if your final destination is 5 hours away, make sure your flight arrives early in the day OR you have made a reservation at a hotel or hostel to stay overnight.
- Do not arrive late at night! You may not be able to get into your housing after 20:00. You must contact your CHI representative, to let them know when you will be arriving.
- **You must log into wt.chinet.org to enter your flight information, as soon as you book your ticket.**

Student and Exchange Visitor Information System: wt.chinet.org

To access wt.chinet.org, you need your family name as it appears on your DS-2019 form and your 11 digit DS number, starting with letter N

- You must log into wt.chinet.org to enter your flight information, as soon as you book your ticket.
- You are required to access wt.chinet.org within three days of arrival into the United States.
- You are required to access wt.chinet.org, every month following your initial check in, for the duration of your program to complete a monthly report.
- Failure to complete SEVIS check-ins may result in a participant's negative program status.

Arriving at a United States Airport

The following documents you MUST have in your possession and present to the U.S. immigration officials upon arrival in the U.S.:

- Valid passport
- DS-2019 Form, the original copy signed with blue ink. Do not accidentally give your loved ones the original copy for safekeeping.
- I-901 SEVIS fee receipt
- Sponsor Letter
- J-1 Job Offer

Arrival Tips:

- The immigration officer will review all documents, validate, and place a stamp on your DS-2019 form and your passport. The officer will then return all validated documents to you, including the DS-2019 form.
- Use your “do not lose it” discipline; remember to collect all documents from the immigration officer. This is a place students often misplace documents. Students are nervous, excited and fail to check they have received everything back before leaving the area.
- Wait to check-in on social media or take a selfie until you check you have all your documents. You should have no problem entering the U.S. as long as you have all the proper documentation, cooperate and communicate respectfully with the U.S. immigration officers at the airport.
- Before you leave your home country, map out your trip. www.rome2rio.com is a great website for this research. Your CHI representative will send you exact instructions in a letter prior to your arrival. Check your email daily, it is very important.
- When estimating your arrival time please add extra time for waiting for baggage, eating, or missing a bus or train connection.
- Be sure to have a small amount of American currency for regional travel before leaving the airport. Do NOT accept rides from strangers at the airport!
- Plan accordingly, if arriving late at night, please stay in a hotel or hostel and travel in the morning. (You will not be able to get into your housing if arriving late at night.)

Arriving at your Final Destination | What do I need to do now?

- It is very important that you log into the SEVIS system within three days of your arrival. Log into wt.chinet.org or if you have no access to the web, call CHI for assistance at 1-800-432-4643. There are **SERIOUS** consequences if you do not validate your visa, beginning with a cancellation of your visa, so do it as soon as possible!
- Go to your employer; let them know you have arrived safely. They will provide you with your orientation/start date.
- 24 hours after entering the United States you will be required to retrieve a document on the internet called an I-94.
- Wait 5 business days after checking into SEVIS and report to the Social Security office to apply for a Social Security number.

I - 94

The I-94 Form is the Arrival / Departure Record that is issued by the immigration officer at the airport to all foreign visitors entering the United States. All I-94 records are created electronically and accessible online 24 hours after arrival.

Retrieval Tips:

- Wait 24 hours following your arrival in the US before you attempt to retrieve your I-94 number.
- Ensure that the computer you are using is connected to a printer (local library).
- Go to the <https://i94.cbp.dhs.gov>
- Enter the required information in all CAPITAL letters. Please make sure you enter your name exactly as it appears in your passport
- Click Submit

- You must print this document; it is a required document at Social Security

Applying for a Social Security Number

You must register with the local Social Security Office to get your card and number. YOU MUST WAIT TO RECEIVE YOUR “S” STATUS, before you apply for a Social Security card! This in most cases takes 5 business days from the day you first checked into SEVIS.

Required Documents:

- Valid passport
- DS-2019 Form, the original copy signed with blue ink. Do not accidentally give your loved ones the original copy for safekeeping.
- I-901 SEVIS fee receipt
- J-1 Visa
- I - 94 Form, printed from the internet at your local community library or employer.

Second Jobs

- CHI does not provide second jobs. Second jobs are possible. However, your responsibility is to your primary employer. It is the primary employer’s participation in the Work & Travel program that has afforded you the opportunity to come to the United States.
- A second job may not conflict with your primary CHI position in anyway.
- If you are considering looking for a second job, please be reminded the employer must be approved by CHI for your safety.
- Failure to have any second job approved may result in a participant’s negative program status.
- Your CHI representative will send you exact instructions in a letter prior to your arrival. Check your email daily, it is very important.

Health Insurance

It is required that all participants of Work & Travel obtain health insurance.

- Your health insurance provider will email your instructions to obtain your insurance card.
- Do not leave your home country without accessing the health insurance website and printing your card.
- In the United States, doctors and hospitals are in different buildings. Doctors generally have offices away from the hospital or work at an urgent care facility or clinic.
- For a basic illness, you will go to a doctor’s office, urgent care facility or clinic, pay \$100 and your insurance will cover any costs incurred after \$100.
- For a serious emergency, you will go to the hospital or emergency center, pay \$350 and your insurance will cover any costs incurred after \$350.
- There is limited coverage for dental emergencies. Please visit your primary care doctor and dentist in your home country before traveling to the United States.
- Please contact your CHI representative to report any illness or emergency you may have, so they can provide assistance.

Know the Law

- In the United States, you must be at least 21 years of age to purchase, possess or consume alcoholic beverages. Underage drinking is illegal and can have severe consequences for young people who drink and for adults who provide alcoholic beverages to those under 21.